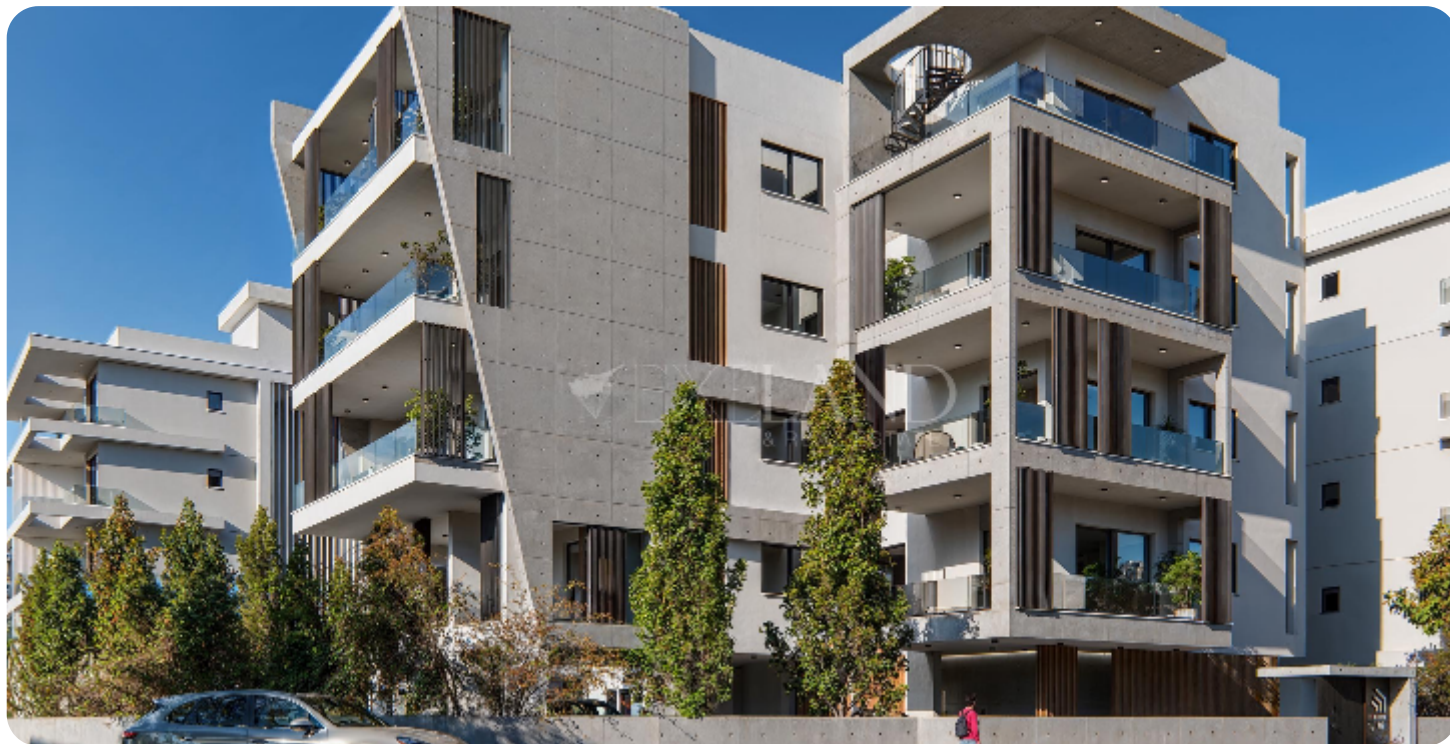

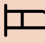









Apartment in Germasogeia

Ref. No 2400



-  Apartment
-  Standard Apartment
-  2 bedrooms
-  1 bathroom
-  1 wc
-  66m² internal
-  23m² veranda
-  93m² total
-  1st floor (out of 4)
-  1 parking
-  Off-plan

ASKING PRICE:

€ 290,000+VAT

Limassol, Germasogeia

[VIEW ON THE WEBSITE](#)

Modern one-bedroom + office apartment located in the heart of the Germasogeia area, close to all amenities.

The apartment features an open-plan kitchen connected to the living and dining area, one bedroom, a main bathroom, and an additional versatile room that can be used either as a bedroom or as an office space, depending on your needs. The living room provides access to a cozy covered veranda.

The internal covered area is 66 sq.m., while the covered veranda is 23 sq.m.

Delivery: 2028

Main Features

Furniture: Unfurnished

Construction year: 2028

Proximity: Above Highway

Kitchen type: Open plan

Underfloor heating: Electrical

A/Cs: Provision

Energy efficiency: A

Additional Features

Modern design: ✓

Landscaped garden: ✓

Garden: ✓

Balcony: ✓

Study / Office: ✓

Maids room: ✓

Store room: ✓

Specifications

High ceilings: ✓

Double Glazing: ✓

Built in Cabinets: ✓

Open Plan Kitchen: ✓

Thermal insulation: ✓

Pressurized Water System: ✓

Solar Heating: ✓

Facilities

Elevator: ✓

Gated Complex: ✓

Easy access to highway: ✓

Emergency Exit: ✓

Fire Alarm: ✓

Easy access to main roads: ✓

Views

Garden View: ✓

Valley View: ✓

Mountain View: ✓



