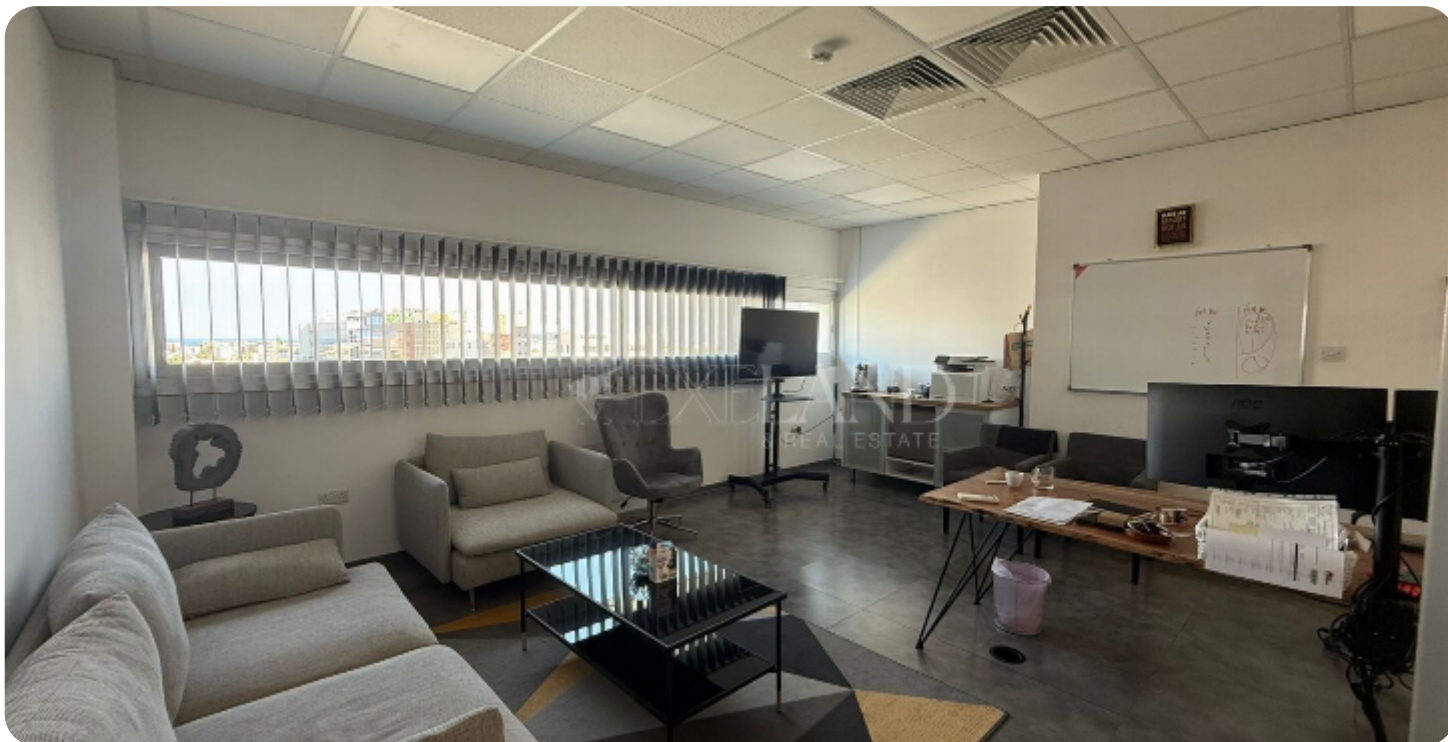



## Office in Linopetra


Ref. No 1992




 Office

 Whole Floor Office

 6 wcs

 1600m² covered

 11 parkings

 Resale

ASKING PRICE:

€ 35,000/ month +VAT

Limassol, Linopetra

[VIEW ON THE WEBSITE](#)

Modern and spacious office space with city views located in the Linopetra area, with easy access to the highway and seaside road. The total covered area is 1600 sq. m and it's available unfurnished (furniture can be sold to a new tenants), with a central VRV air conditioning system, raised floor, double-glazed windows, server room, 6 WC, 3 kitchens and 11 dedicated parking places.

Available from 1.08.2025

### Main Features

Furniture: Unfurnished

Year of renovation: 2019

Proximity: Below Highway

A/Cs: VRV System

Construction type: Concrete

Floor type: Laminate

Uncovered Parking: ✓

Energy efficiency: B

### Additional Features

Balcony: ✓

Separate Kitchen: ✓

Server room: ✓

Conference room: ✓

### Facilities

Elevator: ✓

Electric Gates: ✓

Emergency Exit: ✓

Fire Alarm: ✓

### Views

City View: ✓

South Site Direction: ✓





